



MATERIAL

Knurled aluminium profile, anodised, black colour.

CAP

Acetal resin based (POM) technopolymer, light-grey colour.

HANDLE

Polyamide based (PA) technopolymer, black colour, glossy finish.

STANDARD EXECUTIONS

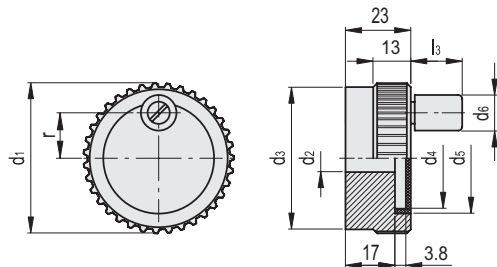
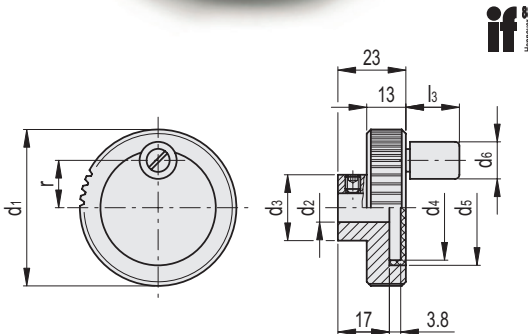
- **GN 736-B-A:** H8 reamed hole, without handle.
- Assembly by means of a supplied stainless steel transversal grub screw UNI 5929 (grub screw with hexagon socket and cup end).
- **GN 736-B-D:** H8 reamed hole, with revolving handle.
- Assembly by means of a supplied stainless steel transversal grub screw UNI 5929 (grub screw with hexagon socket and cup end).
- **GN 736-K-A:** H8 reamed hole and keyway in compliance with DIN 6885/1 tolerance P9 (see page A-15), without handle.
- **GN 736-K-D:** H8 reamed hole and keyway in compliance with DIN 6885/1 tolerance P9 (see page A-15), with revolving handle.

SPECIAL EXECUTIONS ON REQUEST

On the surface of the cap words, marks, graphic symbols, etc...can be tampoprinted in colours.



Conversion Table	
1 mm = 0.039 inch	
d1	
mm	inch
52	2.05
62	2.44



GN 736-B



Code	Description	d1	d2	H8	d3	d4	d5	d6	l3	r	△
GN.19501	GN 736-52-B10-A	52	10	22	37	39.5	-	-	-	56	
GN.19502	GN 736-52-B10-D	52	10	22	37	39.5	13	19	15.5	69	
GN.19511	GN 736-62-B10-A	62	10	25	47	49.5	-	-	-	76	
GN.19512	GN 736-62-B10-D	62	10	25	47	49.5	14	21	20.5	90	

GN 736-K

GN.19505	GN 736-52-K10-A	52	10	22	37	39.5	-	-	-	55	
GN.19506	GN 736-52-K10-D	52	10	22	37	39.5	13	19	15.5	68	
GN.19515	GN 736-62-K10-A	62	10	25	47	49.5	-	-	-	75	
GN.19516	GN 736-62-K10-D	62	10	25	47	49.5	14	21	20.5	89	



MATERIAL

Knurled aluminium profile, anodised, black colour.

CAP

Acetal resin based (POM) technopolymer, light-grey colour.

HANDLE

Polyamide based (PA) technopolymer, black colour, glossy finish.

STANDARD EXECUTIONS

- **GN 736.1-B-A:** H8 reamed hole, without handle.
- **GN 736.1-B-D:** H8 reamed hole, with revolving handle.
- **GN 736.1-K-A:** H8 reamed hole and keyway in compliance with DIN 6885/1 tolerance P9 (see page A-15), without handle.
- **GN 736.1-K-D:** H8 reamed hole and keyway in compliance with DIN 6885/1 tolerance P9 (see page A-15), with revolving handle.

SPECIAL EXECUTIONS ON REQUEST

- On the surface of the cap words, marks, graphic symbols, etc...can be tampoprinted in colours.
- On the plain surface of the handwheel precision graduations can be laser-engraved (see Graduations on page 703).

